

The background image shows the Arizona School for the Arts building, a modern structure with a prominent red metal roof and vertical slats. A sign in the distance reads "ARIZONA SCHOOL FOR THE ARTS" and "Arts". The scene is set outdoors with trees and a clear sky.

ARIZONA SCHOOL FOR THE ARTS

SAMPLE SUBMISSION

INTRODUCTION | PROJECT NARRATIVE

Arizona School for the Arts, established in 1995 as non-profit public charter school for students in grades 5-12 located in the heart of downtown Phoenix. The school's unique mission – to inspire creative thinkers and leaders through an innovative concentration in college preparation informed by the performing arts – draws its 840 students from over 100 zip codes across Maricopa County. With the formation of strategic partnerships and recruiting initiatives, ASA serves an increasingly diverse population. Over 24% of the student body qualifies for Free or Reduced Lunched (an increase of over 10% in 2 years). ASA further expands its mission after school by hosting programs and performances for several under-resourced youth based arts partners from the Phoenix Youth Arts Collective thus expanding the reach and depth of artistic enrichment to students beyond ASA.

Beginning in March of 2020 when the Covid-19 global pandemic shuttered schools and performing arts venues across the nation, ASA students continued their academic and performing arts classes on-line – double impact for our artistically motivated youth. Holding arts classes – music, theatre and dance – proved to be most challenging and also most vital for the social and emotional health of our children. So, even as arts venues continued to remain closed, ASA pushed arts classes outdoors converting parking lots, and every available outdoor space into makeshift “classrooms” to allow for safe physical distancing. Providing access to performing arts during this emotionally traumatic time in the lives of our students, has proven to be an essential lifeline for our young people and their social and emotional health. **Outdoor spaces continue to be essential to ASA and after school partners as the pandemic continues. Utilizing the QCP products to re-imagine learning and the arts by create intimate spaces for performing, practicing, socializing, learning and connection may help us all envision the classrooms of the future.**



DESIGN | EXISTING CAMPUS + OPPORTUNITY NODES

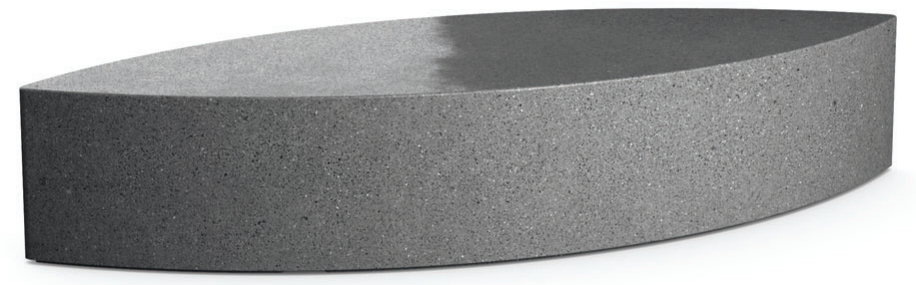


SAMPLE SUBMISSION

DESIGN | OUTDOOR CLASSROOM



SAMPLE SUBMISSION



DESIGN | PERFORMANCE NODE 1



SAMPLE SUBMISSION



DESIGN | PERFORMANCE NODE 2



DESIGN | LOUNGE NODE





SAMPLE SUBMISSION



THANK
YOU

SAMPLE SUBMISSION